

Evaluation of the -174G>C Genetic Polymorphism of Interleukin-6 in Iranian Patients with Chronic Lymphocytic Leukemia

Zakieh Rostamzadeh Khameneh ^{1*}, Mahshid Mohammadian ², Ali Eishi Oskuie ³, Rahim Asghari ⁴, Mohadeseh Nemati ²

¹ Solid Tumor Research Center, Urmia University of Medical Sciences, Urmia, Iran

² Department of Clinical Biochemistry, School of Medicine, Urmia University of Medical Sciences, Urmia, Iran

³ Department of Hematology and Medical Oncology, Urmia University of Medical Sciences, Urmia, Iran 4. Department of Internal Medicine, School of Medicine, Urmia University of Medical Sciences, Urmia, Iran

*Corresponding Author: Zakieh Rostamzadeh Khameneh, Solid Tumor Research Center, Urmia University of Medical Sciences, Urmia, Iran.

Received Date: April 11, 2024; Accepted Date: April 24, 2024; Published Date: May 10, 2024.

Citation: Zakieh R. Khameneh, Mahshid Mohammadian, Ali E. Oskuie, Rahim Asghari, Mohadeseh Nemati, (2024), Evaluation of the -174G>C Genetic Polymorphism of Interleukin-6 in Iranian Patients with Chronic Lymphocytic Leukemia, *International Journal of Clinical and Medical Case Reports*, 3(3); **Doi:**10.31579/2834-8664/048

Copyright: © 2024, Zakieh Rostamzadeh Khameneh. This is an open-access article distributed under the terms of the Creative Commons Attribution License, which permits unrestricted use, distribution, and reproduction in any medium, provided the original author and source are credited.

Abstract:

Background & Objective: Interleukin-6 (IL-6) is involved in inflammation and has a significant role in chronic lymphocytic leukemia (CLL) progression. Accordingly, IL-6 level may increase in CLL-affected patients compared to healthy individuals. The -174G>C single nucleotide polymorphism (SNP) in IL-6 promoter region has been related to differences in IL-6 transcription. Therefore, we investigated the possible association of IL-6 polymorphism with CLL.

Methods: We examined the -174G>C SNP in IL-6 gene and studied its possible relationship with CLL in affected patients and in healthy controls using Amplification Refractory Mutation System- polymerase chain reaction genotyping method. IL-6 plasma level was measured in both studied groups.

Results: According to the results, IL-6 mean plasma concentration was increased significantly in the CLL patients compared to the controls. However, -174G>C genotype of the IL-6 gene was not associated with CLL. Furthermore, there were no significant differences in the distribution of allele and genotype frequencies between the CLL affected patients and the controls (P>0.05).

Conclusion: Our study showed that -174G>C SNP in promoter of IL-6 gene could not be considered a risk factor for CLL. Larger prospective studies should be performed to confirm our results.

Keywords: pectus excavatum; modified ravitch; aesthetic; cardiopulmonary; outcomes

Introduction

The B-cell chronic lymphocytic leukemia (B-CLL) cells growth is associated with exogenous growth factors (in vitro) (1). Cytokines as small proteins are produced by various cells. Indeed, cytokines have a diverse range of physiological functions, for example, in immune system. In this regard, functional pleiotropy is one of the features of these proteins. Cytokines have a regulatory function in proliferative activities and cell differentiation based on the cell type. Various types of cytokines encompass interferons, growth factors, and interleukins (2). Interleukin-6 (IL-6) as a multifactorial cytokine may have a role in the severity and progression of numerous types of cancers. Various observational studies have proposed that circulating IL-6 can describe interindividual variability in cancer predisposition (3). Considering that plasma levels of IL-1 beta, IL-

6, and IL-1Ra have been proposed to partially rely on gene polymorphism, the formerly described polymorphisms of these genes and the IL-6 gene were investigated (1). Some common polymorphisms of cytokine genes are involved in the Th1/Th2 balance and inflammatory response and may have a role in the CLL progression (4). In this regard, IL-6 (a 23.7-kDa pleiotropic cytokine) is produced by immune cells, adipose tissue, and cardiovascular components. This cytokine primarily functions in the progression of inflammation, as well as functioning as an endogenous pyrogen in patients with infection (5, 6). Several studies have focused on the IL6 promoter region since various polymorphisms including -598A/G, -572C>G, -597G/A, and -174G>C are recognized in this region. Among these

polymorphisms, $-572C>G$ and $-174G>C$ are the most investigated ones (5). Considering the above-mentioned, we aimed to evaluate the $-174G>C$ single-nucleotide polymorphism (SNP) in IL-6 gene, its possible susceptibility to CLL, and also its probable effect on IL-6 plasma levels. To this end, we comparatively evaluated the $-174G/C$ SNP of IL-6 in Iranian CLL-affected patients and the controls.

Material and Methods

Demographic Data and Blood Sampling

In order to evaluate the $-174G/C$ SNP in the promoter region of IL-6 gene, 35 CLL patients and 34 healthy controls from the hospitals affiliated to Urmia University of Medical Sciences, Iran, were included in this case-control study. The study protocol was reviewed

and approved by Urmia University of Medical Sciences (Code of Ethics: IR.UMSU.REC. 1395.272). Patients were aged 27-64 years with a history of confirmed CLL who had referred to the educational hospitals of Urmia University of Medical Sciences, between January and September 2019 and were recruited as the patient group. CLL patients with other disorders were excluded from this study. Demographic information (age, gender, etc.) of the subjects in both study and control groups were collected. Based on an oncologist diagnosis, 35 CLL patients and 34 healthy controls were considered for further analysis. Then in the CLL patients, CD19, CD5, and CD23 markers were evaluated using immunophenotyping (7) (Table 1). Blood samples were collected in anticoagulant-containing tubes, centrifuged, and their plasma were isolated. The plasma levels of IL6 were measured for both groups using the enzymelinked immunosorbent assay (ELISA).

Immunophenotyping	Percent
CD2	4.5%
CD3	9.1%
CD5	77.3%
CD10	9.1%
CD19	54.5%
CD20	86.4%
CD23	77.3%
CD25	9.1%
CD38	54.5%
CD79	86.4%
CD116	4.5%
BCL2	4.5%

Genomic DNA Extraction and ARMS-PCR for $-174 G>C$ SNP Detection

Table 1. Immunophenotyping of various CD markers in the CLL patients

The blood samples (2 mL) obtained from the patients and controls were subjected for the genomic DNA extraction using the manufacturer's protocol [DNA Purification Kit, GeneAll]. DNA was isolated from the peripheral blood leukocytes to identify the $-174G>C$ gene polymorphism. The extracted DNA was visualized

on agarose gel 1% (Figure 1). To detect the SNP, Amplification Refractory Mutation System- polymerase chain reaction (ARMS-PCR) genotyping method was employed (using specific pairs of primers; Table 2).

Number	Primer Name	Sequence	Product size (bp)
1	IL6-174F1	CACTTTTCCCCCTAGTTGTGTCTTGCC	527
	IL6-174R	ATTCGTTCTGAAGAGGTGAGTGGC	
2	IL6-174F2	CACTTTTCCCCCTAGTTGTGTCTTGCG	527
	IL6-174R	ATTCGTTCTGAAGAGGTGAGTGGC	

Table 2. Specific primers for evaluation of the $-174 G>C$ SNP in promoter of IL-6 gene by ARMS-PCR method.

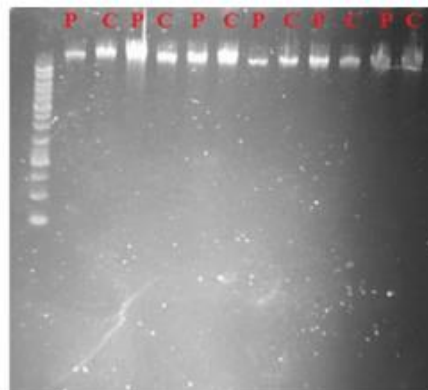


Figure 1: Extracted DNA from the CLL patients and healthy control individuals visualized on 1% agarose gel electrophoresis. P; patient. C; Control.

ARMS-PCR reaction was carried out in a total 20- μ L volume comprising DNA sample, forward and reverse primers, dNTP

(0.3 μ L), $MgCl_2$, Pfu enzyme, and ddH₂O. The PCR amplification was performed as follows: initial denaturation at 94°C for 10 min,

40 cycles of denaturation at 94°C for 45 s, annealing at 58°C for 45 s, and extension at 72°C for 45 s, and final extension at 72°C for 7 min. The products of ARMS-PCR were visualized on Agarose gel 1%, and were compared to the 100-bp DNA Ladder (Thermo Scientific). Then, the odds ratios were utilized for investigating the relationships between IL-6 genetic polymorphism and CLL (with corresponding 95% confidence intervals). Statistical Analysis Statistical analyses were performed using the IBM SPSS software 22 (SPSS Inc., Chicago, Ill., USA) and applying the Pearson Chi-Square test. Indeed, Chisquare test was utilized to compare the genotype and allele frequencies of the -174G>C SNP between the cases and controls. A P-value

Results

To assess the 174G>C polymorphism in the promotor region of IL-6 gene, genomic DNA was extracted from blood samples of the patients and controls and evaluated by ARMS-PCR method. The quality of extracted DNA was confirmed by Agarose gel 1% (Figure 1). The immunophenotyping of various CD markers in the CLL patients are presented in Table 1. Based on the results (Table 3), in subgroup division of patients versus controls, no significant differences were observed in the genotype and allelic distributions between the CLL and control groups (P>0.05). After performing ARMS-PCR, the PCR products were visualized on Agarose gel 1% (Figure 2)

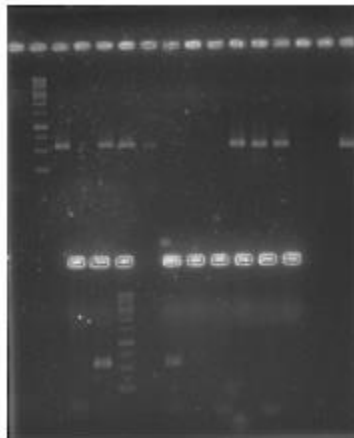


Fig. 2. The PCR product Band pattern of IL6 -174F2 and IL6-174R (upper gel) and IL6-174F1 and IL6-174R. M: 1kb marker.

From the left side of gel, the odd numbers from one indicate the patients and the even numbers indicate the controls. Based on our findings, there was no significant differences (P>0.05) in the frequency of IL-6, -174 GG genotype and G allele (P>0.05) between the CLL group and the controls. Furthermore, there was no significant increase in the distribution of IL-6 GG genotypes, and an insignificant reduction was observed in the frequency of GC genotype (P >0.05) between the CLL patients and the control

subjects (Table 3). Moreover, there was no significant difference in the IL6 (-174C/G) SNP frequencies between the CLL and control individuals. According to our results, the mean IL-6 plasma level was 1.4 pg/mL in the control group. While, the CLL patients had a mean plasma IL-6 level of 7.35 pg/mL. The mean serum concentration of IL-6 was increased significantly in the CLL cases compared to the controls (P<0.05). In our study, the increased IL-6 level was not associated with some studied parameters including the patient age and white cell count.

p-value	Control(female) N=20	Patient (female) N=15	p-value	Control(male) N=14	Patient (male) N=18	p-value	Control N=34	Patient N=33	Genotype distribution
0.225	14(70%)	11(73.33%)	0.311	8(57.14)	13(72.22)	0.308	22(64.7)	24(72.72%)	GG
	6(30%)	3(20%)		4(28.57)	2(11.11%)		10(29.41)	5(15.15%)	GC
	-	2(13.33)		2(14.28%)	3(16.66)		2(5.88%)	4(12.12%)	CC
p-value	Control(female) N=40	Patient (female) N=30	p-value	Control(male) N=28	Patient (male) N=36	p-value	Control N=68	Patient N=66	Allelic distribution
0.344	34(85%)	25(83.33%)	0.361	20(71.42%)	28(77.77)	0.379	54(79.41%)	53(80.3)	G
	3(15%)	5(16.6)		8(28.57)	8(22.2)		14(20.58)	13(19.69)	C

Table 3. Genotype and allelic distributions of -174G>C Polymorphism in the CLL patients and controls by ARMS-PCR method.

Discussion

CLL is considered as one of the prevalent types of leukemia in adults and is recognized by the increase in mature type B lymphocytes in lymphatic organs and peripheral blood (7). IL-6 is the main risk

factor involved in tumorigenesis. Nevertheless, earlier studies on the relationships of polymorphisms in IL-6 promoter through

predisposition to various cancers are rather contrary (8). Indeed, the IL-6 gene is recognized as a pro-inflammatory cytokine and has a significant function in the pathogenesis of numerous cancer types (8). Stimulation of STAT3 and NF-κB is supported by IL-6. Once stimulated, two transcription elements regulate the gene expression of factors involved in the cancer cells' growth (9). IL-6 gene promoter comprises several regulatory sites associated with the gene

expression induction. In the promoter and encoding sequence, various SNPs are found. One of these SNPs is -174G/C, at position -174 of the promoter region [C (cytosine) to G (guanine) transition] (10). It has been indicated that the -174G/C SNP of the IL6 promoter affects the transcription rate of IL-6 (11, 12). The -174G/C polymorphism may be related to the inter-individual variations in the transcription and expression of the IL-6 gene, thereby influencing the vulnerability to various disorders (13). It has been proposed that IL-6 SNP is related to the prognosis of some cancers such as breast cancer, bladder cancer, neuroblastoma, and non-small cell lung cancer (14-19). Although the relationship of -174G>C SNP in the IL-6 gene to various cancers has been evaluated, these results are contradictory (19). Consequently, we conducted this case-control study to evaluate the relationship between the SNP in promoter region of IL-6 gene and CLL. Our results displayed that there was no significant difference in the frequencies of IL-6 promoter SNP (-174G>C) between the healthy controls and CLL patients. Additionally, the subgroup analysis showed that -174G>C polymorphism distribution was not significantly different between the two studied groups. In this study, the plasma levels of IL-6 were increased in the CLL group compared to the controls. Likewise, in a study by Hulkkonen et al., IL-6 plasma concentrations in the B-CLL patients were increased compared to the healthy subjects, corroborating our results. The authors also evaluated the polymorphism in the IL-6 gene. They indicated that the allele frequencies of the studied genes were comparable in the controls and patients. They indicated that some mechanisms except for allelic imbalance of their genes were the main reasons for the profiles of cytokine detected in this disease (1). Definitely, increased levels of IL-6 were associated with overall survival and prognostic factors of CLL (20). Recent studies have shown that in the CLL patients, plasma levels of IL-6 were elevated. The level of IL-6 is increased in a disease stage-dependent manner (1, 20, 21). It has been reported that serum IL-6 levels were increased in the CLL patients compared to the control individuals (22). Based on another report, IL-6 produces both growth-enhancing and differentiation-prompting signals. In this regard, in M1 cells, Stat3 might be a main molecule that regulates the cellular decision from cell growth to differentiation in in M1 cells (23). In another study by Belluco et al., the effects of -174G>C polymorphism on serum level of IL-6 were found in colorectal cancer patients (24). In other study by Mandal et al., a relationship was detected between the -174G/C polymorphism and prostate cancer (25). These results (24, 25) were not in line with our data. These disagreements might be explained by the differences in studied populations. In another study by Liu et al. (26) in 2020, IL-6 (rs2069830) and polymorphisms of IL-10 gene were evaluated in specimens obtained from acute lymphoblastic leukemia-affected children and healthy children. These gene polymorphisms were related to the pathogenesis of childhood acute lymphoblastic leukemia. This result (26) was not similar to our results in that this difference may be related to the demographic parameters of studied populations and type of leukemia. Likewise in a similar study in 2010, the serum levels of IL-6 were evaluated in 30 myeloid leukemia patients versus controls. The results showed that in the myeloid leukemia patients, serum levels of IL-6 were different from those of the controls (27). Furthermore, in a similar study in 2000, on myeloma patients (73 patients), 27 subjects with gammopathy of undetermined significance and 129 healthy controls were included. The results showed that the IL-6 gene polymorphisms did not

associate with multiple myeloma susceptibility (28). We did not find any exact similar study to compare with those found in our study. According to our results, the mean plasma IL-6 level was significantly increased in the CLL patients compared to the healthy controls. Moreover, the -174G>C genotype of IL-6 gene was not related to CLL. There was no difference in the distribution of -174G>C SNP in the CLL cases compared with the controls (P>0.05). Distribution of the GG genotype was not different between the CLL and healthy groups (P>0.05). In addition, the IL-6 GC genotype was not linked to the CLL.

Conclusion

We evaluated frequencies of the -174G>C SNP and its possible effect on the levels of IL-6 as a proinflammatory cytokine. Our results revealed that there was no association between the -174G>C polymorphism in the IL-6 gene and CLL. These findings suggested that predisposition of genetic differences in the IL-6 gene might not be associated with the increased risk of CLL in this studied population. The IL-6 polymorphisms may not have a role in CLL susceptibility in the studied patients. Overall, our preliminary study displayed that G allele and GG genotype of IL-6 (-174G/C) could not be considered as CLL-related risk factors. Larger prospective studies should be conducted to confirm these results.

Acknowledgments: None.

Funding: This study supported financially by Urmia University of Medical Sciences.

Conflict of Interest

None.

References

- Hulkkonen J, Vilpo J, Vilpo L, Koski T, Hurme M. (2000) Interleukin-1 beta, interleukin-1 receptor antagonist and interleukin-6 plasma levels and cytokine gene polymorphisms in chronic lymphocytic leukemia: correlation with prognostic parameters. *Haematologica*; 85(6):600-6. [PMID]
- Salari N, Mansouri K, Hosseini-Far A, Ghasemi H, Mohammadi M, et al. (2021) The effect of polymorphisms (174G> C and 572C> G) on the Interleukin-6 gene in coronary artery disease: a systematic review and meta-analysis. *Genes Environ.*; 12; 43(1):1. [DOI:10.1186/s41021-021-00172-8] [PMID]
- Tian G, Mi J, Wei X, Zhao o, Qiao L, Yang C, et al. (2015) Circulating interleukin-6 and cancer: A metaanalysis using Mendelian randomization. *Sci Rep*; 5, 11394. [DOI:10.1038/srep11394] [PMID]
- Ennas MG, Moore PS, Zucca M, Angelucci E, Cabras MG, et al. (2008) Interleukin-1B (IL1B) and interleukin-6 (IL6) gene polymorphisms are associated with risk of chronic lymphocytic leukaemia. *Hematol Oncol*; 26(2):98-103. [DOI:10.1002/hon.843] [PMID]
- Ma H, Sun G, Wang W, Zhou Y, Liu D, Tong Y, Lu Z. (2016) Association Between Interleukin-6 -572 C>G and -174 G>C Polymorphisms and Hypertension: A Meta-analysis of Case-control Studies. *Medicine*

- (Baltimore); 95(2):e2416. [DOI:10.1097/MD.0000000000002416] [PMID]
6. Zhang X, Liu RY, Lei Z, Zhu Y, Huang JA, et al. (2009) Genetic variants in interleukin-6 modified risk of obstructive sleep apnea syndrome. *Int J Mol Med*; 2:485-93. [DOI:10.3892/ijmm_00000155] [PMID]
 7. Hashemi M, Jalali Kondori B, Esmaili Gouvarchin Ghaleh H, Rostami S. (2020) Association between rs 1800561 CD38 Gene Polymorphism and Chronic Lymphocytic Leukemia Risk. *J Mazandaran Univ Med Sci*; 30 (191):102-8.
 8. Peng X., Shi J., Sun W., Ruan X., Guo Y, et al. (2018). Genetic polymorphisms of IL6 promoter in cancer susceptibility and prognosis: a meta-analysis. *Oncotarget*; 9: 12351-64. [DOI:10.18632/oncotarget.24033] [PMID]
 9. Allegra A, Musolino C, Tonacci A, Pioggia G, Casciaro M, Gangemi S. (2020). Clinico-Biological Implications of Modified Levels of Cytokines in Chronic Lymphocytic Leukemia: A Possible Therapeutic Role. *Cancers (Basel)*. 12(2): 524. [DOI:10.3390/cancers12020524] [PMID]
 10. Popko K, Gorska E, Demkow U. (2010). Influence of interleukin-6 and G174C polymorphism in IL-6 gene on obesity and energy balance. *Eur J Med Res; 15 Suppl 2(Suppl 2)*:123-7. [DOI:10.1186/2047-783X-15-S2-123] [PMID]
 11. Walch K, Grimm C, Zeillinger R, Huber JC, Nagele F, et al. (2004). common interleukin-6 gene promoter polymorphism influences the clinical characteristics of women with polycystic ovary syndrome. *Fertil Steril*; 81(6):1638-41. [DOI:10.1016/j.fertnstert..01.021] [PMID]
 12. Fishman D, Faulds G, Jeffrey R, Mohamed-Ali V, Yudkin JS, Humphries S, et al. (1998). The effect of novel polymorphisms in the interleukin-6 (IL-6) gene on IL-6 transcription and plasma IL-6 levels, and an association with systemic-onset juvenile chronic arthritis. *J Clin Invest*; 102: 1369- 76. [DOI:10.1172/JCI2629] [PMID]
 13. Ramis IB, Vianna JS, Gonçalves CV, von Groll A, Dellagostin O, et al. (2017). Polymorphisms of the IL-6, IL-8 and IL-10 genes and the risk of gastric pathology in patients infected with *Helicobacter pylori*. *J Microbiol Immunol Infect*; 50(2):153-9. [DOI:10.1016/j.jmii.2015.03.002] [PMID]
 14. DeMichele A, Martin AM, Mick R, Gor P, Wray L, et al. (2003). -6 -174G->C polymorphism is associated with improved outcome in high-risk breast cancer. *Cancer Res*; 63:8051-6.
 15. Ahirwar D, Kesarwani P, Manchanda PK, Mandhani A, Mittal RD. (2008). Anti- and proinflammatory cytokine gene polymorphism and genetic predisposition: association with smoking, tumor stage and grade, and bacillus Calmette-Guérin immunotherapy in bladder cancer. *Cancer Genet Cytogenet*; 184(1):1- 8. [DOI:10.1016/j.cancergencyto..02.015] [PMID]
 16. Lagmay JP, London WB, Gross TG, Termuhlen A, Sullivan N, et al. (2019). significance of interleukin-6 single nucleotide polymorphism genotypes in neuroblastoma: rs1800795 (promoter) and rs8192284 (receptor). *Clin Cancer Res*; 15:5234-9. [DOI:10.1158/1078-0432.CCR-08-2953] [PMID]
 17. Gomes M, Coelho A, Araújo A, Azevedo A, Teixeira AL, et al. (2015). IL-6 polymorphism in non-small cell lung cancer: a prognostic value? *Tumour Biol*; 36(5):3679-84. [DOI:10.1007/s13277-014-3006- 6] [PMID]
 18. Totaro F, Cimmino F, Pignataro P, Acierno G, De Mariano M, Longo L, et al. (2013). Impact of interleukin-6 -174 G>C gene promoter polymorphism on neuroblastoma. *PLoS One*; 8(10):e76810. [DOI:10.1371/journal.pone.0076810] [PMID]
 19. Zhai K, Yang Y, Gao ZG, Ding J. (2017). Interleukin-6-174G>C gene promoter polymorphism and prognosis in patients with cancer. *Oncotarget*; 8(27):44490-7. [DOI:10.18632/oncotarget.17771] [PMID]
 20. Lai R, O'Brien S, Maushoury T, Rogers A, Kantarjian H, et al. (2017). Prognostic value of plasma interleukin-6 levels in patients with chronic lymphocytic leukemia. *Cancer*; 95(5):1071- 5. [DOI:10.1002/cncr.10772] [PMID]
 21. Reittie J, Yong K, Panayiotidis P, Hoffbrand A. Interleukin-6 inhibits apoptosis and tumor necrosis factor induced proliferation of B-chronic lymphocytic leukemia. *Leuk Lymphoma*. 1996; 22: 83- 90. [DOI:10.3109/10428199609051732] [PMID]
 22. Fayad L, Keating MJ, Reuben JM, O'Brien S, Lee BN, et al. (2001). interleukin-10 levels in chronic lymphocytic leukemia: correlation with phenotypic characteristics and outcome. *Blood*. Jan 1; 97(1):256-63. [DOI:10.1182/blood.V97.1.256] [PMID]
 23. Nakajima K, Yamanaka Y, Nakae K, Kojima H, Ichiba M, Kiuchi N, et al. (1996). A central role for Stat3 in IL-6-induced regulation of growth and differentiation in M1 leukemia cells. *EMBO J*; 15(14):3651-8. [DOI:10.1002/j.1460-2075.1996.tb00734.x] [PMID]
 24. Belluco C, Olivieri F, Bonafè M, Giovagnetti S, Mammano E, et al. (2003). -174 G>C polymorphism of interleukin 6 gene promoter affects interleukin 6 serum level in patients with colorectal cancer. *Clin Cancer Res*; 9(6):2173-6. [PMID]
 25. Mandal S, Abebe F, Chaudhary J. (2014). -174G/C polymorphism in the interleukin-6 promoter is differently associated with prostate cancer incidence depending on race. *Genet Mol Res*; 13(1):139-51. [DOI:10.4238/2014.January.10.5] [PMID]
 26. Liu RT, Wang XX, Sun JR, Gao N, Yu WZ. (2020). Correlations of IL-6 and IL-10 gene polymorphisms with childhood acute lymphoblastic leukemia. *Eur Rev Med Pharmacol Sci*; 24(15):8048-56. [PMID] [DOI: 10.26355/eurrev_202008_22488]
 27. Alizadeh S, Bohloli S, Abedi A, Mousavi S H, Dargahi H, et al. (2000). Investigation of Leptin, Leukemia Inhibitory Factor (LIF), and IL-6 Serum Levels in Myeloid Leukemia. *IJBC*. 2010; 2 (4). 28. Zheng C, Huang DR, Bergenbrant S, Sundblad A, Osterborg A, Björkholm M, Holm G, Yi Q. Interleukin 6, tumour

necrosis factor alpha, interleukin 1beta and interleukin 1 receptor antagonist promoter or coding gene polymorphisms in multiple myeloma. *Br J Haematol.*;

109(1):39-45. [PMID] [DOI:10.1046/j.1365-2141.2000.01963.x]

Ready to submit your research? Choose ClinicSearch and benefit from:

- fast, convenient online submission
- rigorous peer review by experienced research in your field
- rapid publication on acceptance
- authors retain copyrights
- unique DOI for all articles
- immediate, unrestricted online access

At ClinicSearch, research is always in progress.

Learn more <http://clinicsearchonline.org/journals/international-journal-of-clinical-and-medical-case-reports>



© The Author(s) 2024. **Open Access** This article is licensed under a Creative Commons Attribution 4.0 International License, which permits use, sharing, adaptation, distribution and reproduction in any medium or format, as long as you give appropriate credit to the original author(s) and the source, provide a link to the Creative Commons licence, and indicate if changes were made. The images or other third party material in this article are included in the article's Creative Commons licence, unless indicated otherwise in a credit line to the material. If material is not included in the article's Creative Commons licence and your intended use is not permitted by statutory regulation or exceeds the permitted use, you will need to obtain permission directly from the copyright holder. To view a copy of this licence, visit <http://creativecommons.org/licenses/by/4.0/>. The Creative Commons Public Domain Dedication waiver (<http://creativecommons.org/publicdomain/zero/1.0/>) applies to the data made available in this article, unless otherwise stated in a credit line to the data.